

XGN15-12

交流金属封闭开关设备和控制设备

ISO9001



.....	1
.....	2
.....	2
.....	3
.....	3
.....	4
.....	9
.....	12
.....	12

XGN15-12



IEC 298

GB 3906

ABB

SF6

VHY1-12

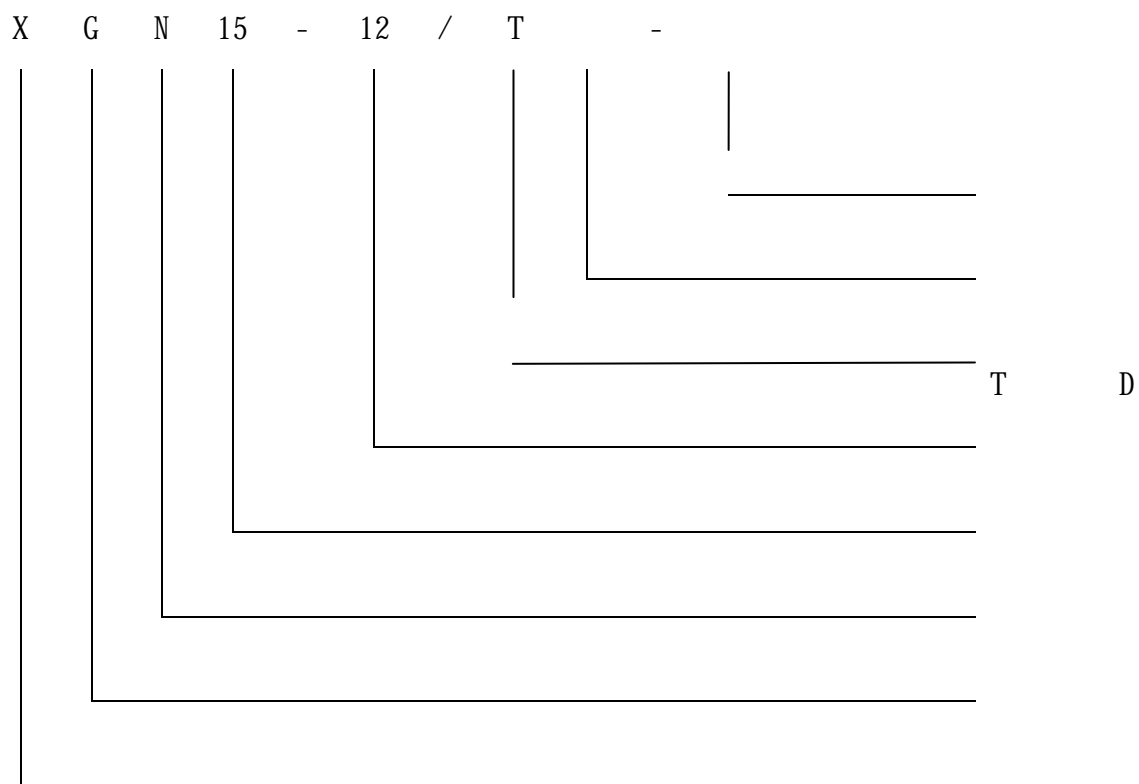
VZP-12

IP3X

50Hz

10kV

;



GB 1985-1989

GB/T 3309-1989

GB 3804-1990 3~63kV

GB 3906-1991 3 35kV

GB 4208-1993

GB/T 11022-1999

GB/T 13384-1992

GB/T 16926-1997 —

GB/T 16927.1-1997

- 1)                    -15                    +40                    24 h  
    35
- 2)                    1000m
- 3)    95%    90%
- 4) 24 h    2. 2kPa  
    1. 8kPa
- 5)                    8
- 6)    /

:

1

			FLN36-12D	FLRN36-12D	VHY1-12 VZP1-12
1		kV	12		
2		A	630	125	1250
3		A	630 10		
4		A	630		31.5
5		A	10		
6		kVA	1250		
7		kA	31.5		31.5
8		A	1550		
9	( )	kA/s	20/4		25/4
10	( )	kA	31.5		63
11		kV	125		
12			2000		3000

**交流金属封闭开关设备和控制设备**

13		$\mu\Omega$	<70	<70( )	<70
14		s	0.06		
15	SF <sub>6</sub>	MPa	0.045		

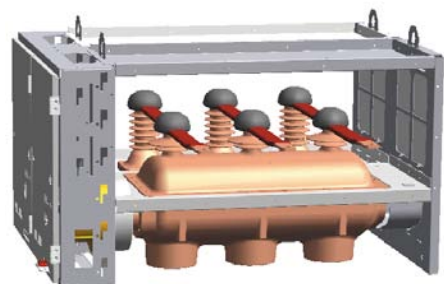
2

1		mm	11± 1.0
2			4± 1
3		ms	2
4			2
5		mm	10
6			210± 2.0
7		N	2500± 200
8	6mm	m/s	1.0± 0.2
9			0.7± 0.2
10		ms	60 80
11			75 100
12			50

GB3906. IEC298

1

( )



2

SF6

SF6



GN30

3

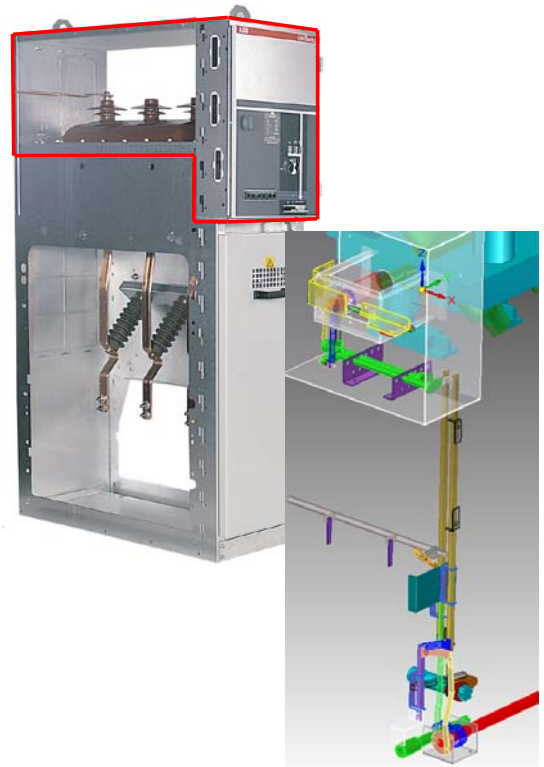
4

a

b

c

d







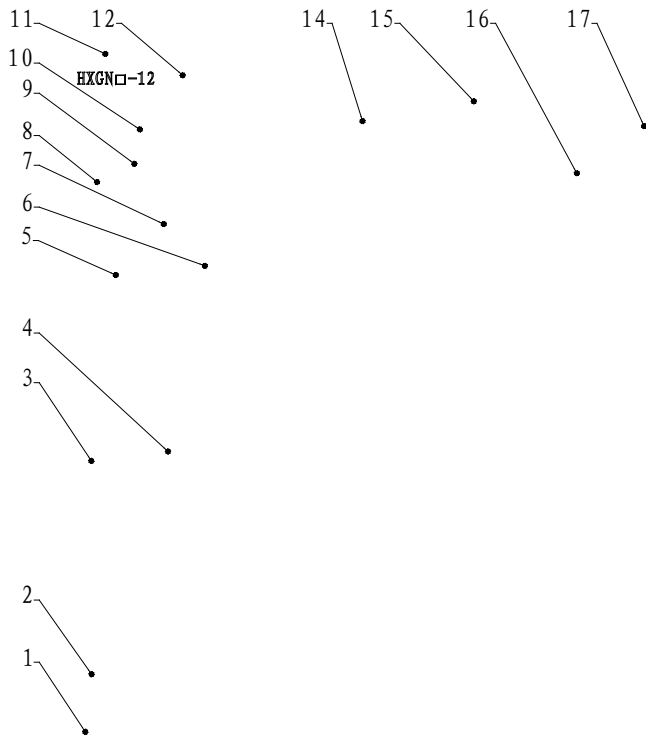


图 1 进线柜示意图

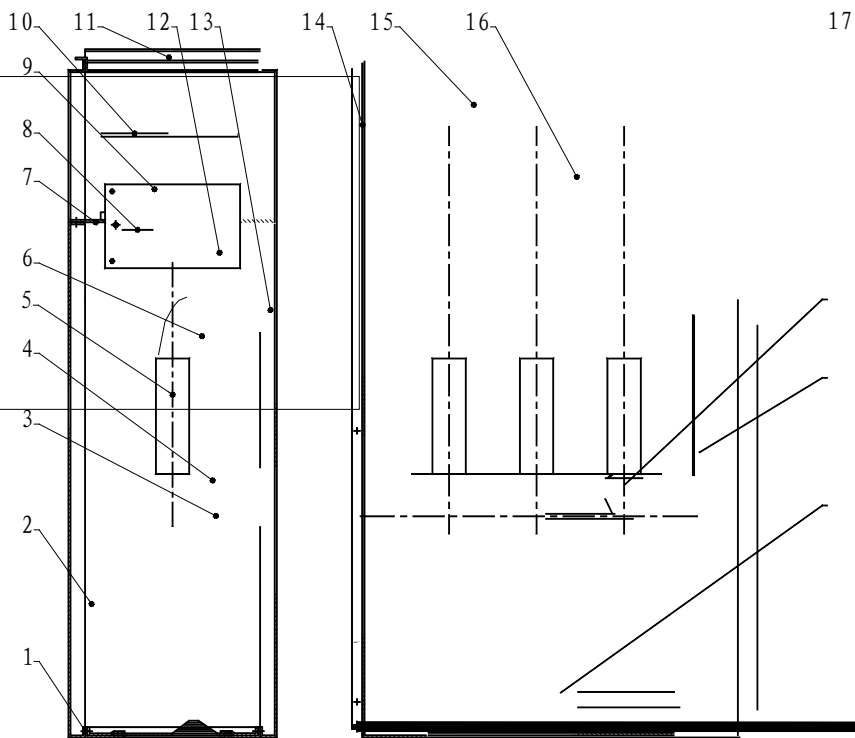
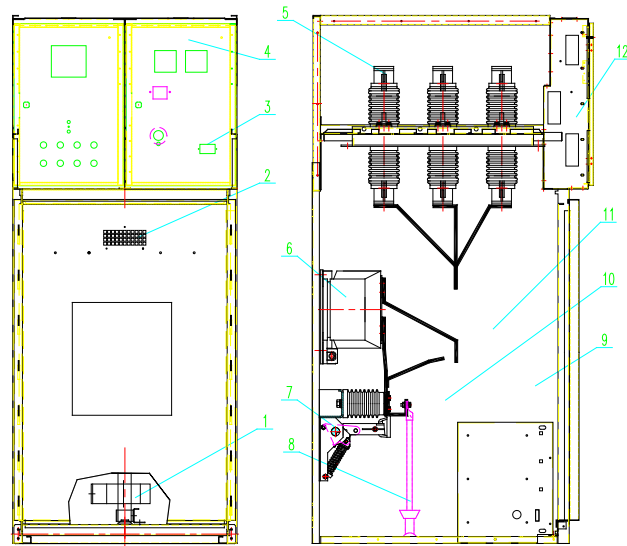


图 2 出线柜示意图 (去掉前门)



XGN15-12 断路器柜

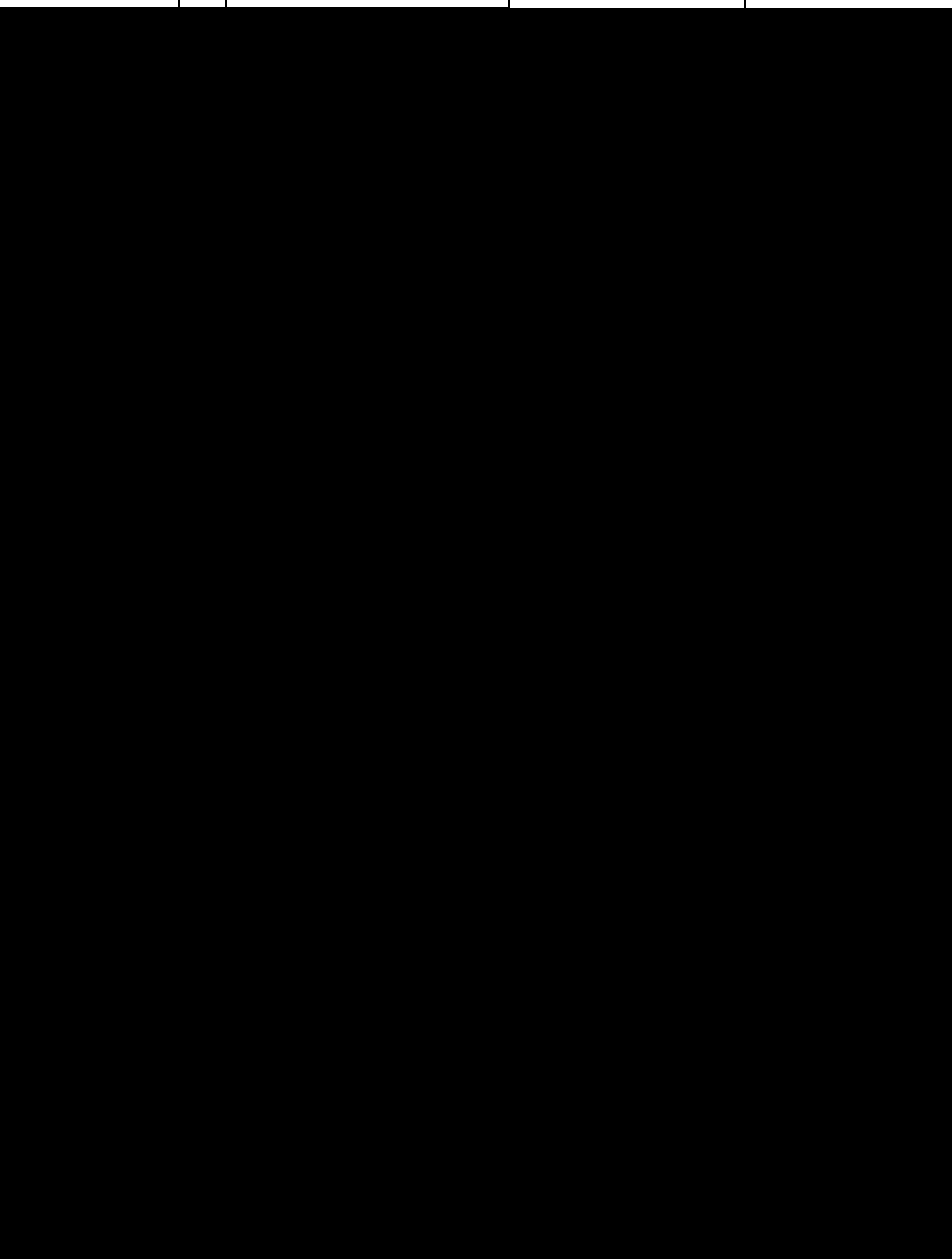
- |         |       |        |        |        |         |
|---------|-------|--------|--------|--------|---------|
| 1 零序互感器 | 2 视察窗 | 3 铭牌   | 4 本体结构 | 5 隔离开关 | 6 电流互感器 |
| 7 接地开关  | 8 电缆  | 9 机械联锁 | 10 避雷器 | 11 断路器 | 12 仪表室  |

		01	02	03	04
	mm			500	750
	mm			1850/1600	1850/1600
	FLN/FLRN	1	1	1	1
	S LAJ XRNP			XRNP-10/0.5A*3	XRNP-10/0.5A*3
	LZZBJ9		1 3		1 3
	PJ-863	1	1	1	1
	HY5WZ(S)	3	3	3	3
	RZ(E)L10			2 3	2 3
				PT	
		05	06	07	08
	mm	500	500	375	375
	mm	1850/1600	1850/1600	1850/1600	1850/1600
	FLN/FLRN	1	1		
	S LAJ	3	3		
	LZZBJ9				
	PJ-863	1	1		1
	HY5WZ(S)				3
	RZ(E)L10		2 3		
		1	1		1
			PT/		

		09	10	11	12
	mm	375	500	375 500	500
	mm	1850/1600	1850/1600	1850/1600	1850/1600
	FLN/FLRN			1	1
	S LAJ XRNP		XRNP-10/0.5A*3		
	LZZBJ9	1 3			1 3
	PJ-863	1	1	1	1
	HY5WZ(S)	3	3	3	3
	RZ(E)L10		2 3		
		1	1		
			PT		
		13	14	15	16
	mm	750	375	375	

		17	18	19	20
	mm	500	750	750	750
	mm	1850/1600	1850/1600	1850	1850
	GN30			1	1
	VHY1/VZP			1	1
	LZZBJ9	1 3	1 3	1 3	1 3

1 1 (9)Tj Tc 0.011



- 1.
- 2.
- 3.
- 4.
- 5.

RAL7035